

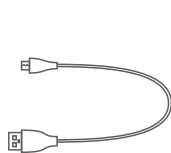
## User's Manual Bluetooth Wireless Speaker

# H2GO™ BLUETOOTH WIRELESS SPEAKER by SOUNDSTREAM.

### What's In The Box



X1  
Bluetooth speaker



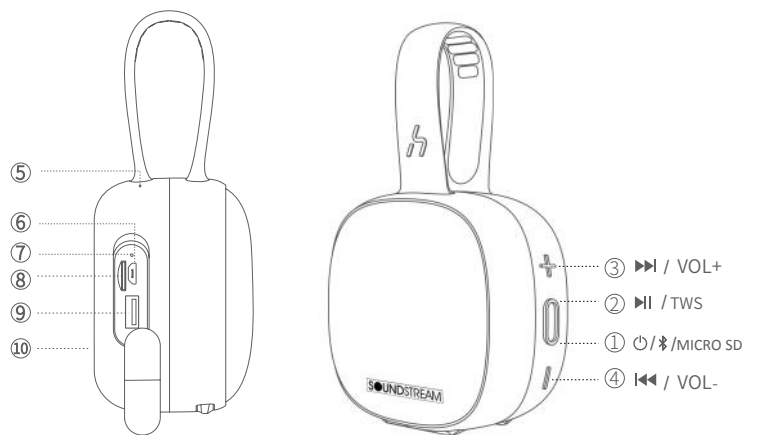
X1  
Charging Cable



X1  
Instruction Manual

### The product structure (with figures)

1. Power
2. Play/Pause
3. Vol+/Next
4. Vol-/Prev
5. Microphone
6. Charging port
7. Charging indicator
8. Micro SD card slot
9. USB charging port
10. LED power indicator



### Bluetooth & TWS

#### 1. Bluetooth connection

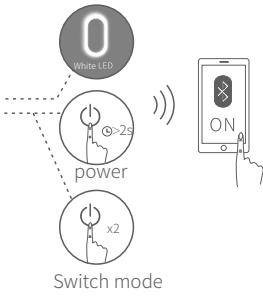
Turn on the speaker and will Enter pairing mode

①-2s The white LED will blink fast, you can turn on your Bluetooth device and search for H2GO Speaker.

①-x2 Un-pair connected device and re-enter pairing mode, it will switch between Micro SD card/Bluetooth mode.

Rapidly flashing white Pairing mode

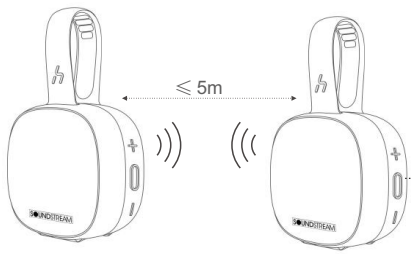
① Steady white Connected to a device



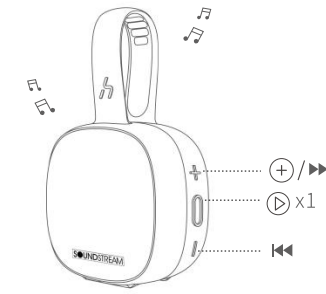
#### 2. TWS

When 2 H2GO TWS connect for the first time, dual press. And they will automatically reconnect for the subsequent use.

①-x2 Dual press. Disconnect the TWS and enter the pairing mode again.

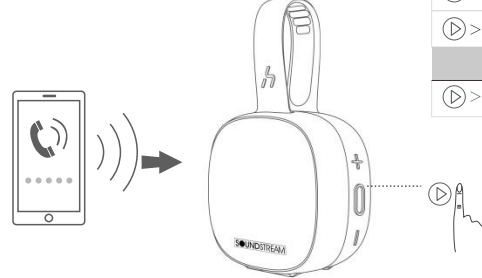


### 2. Music control



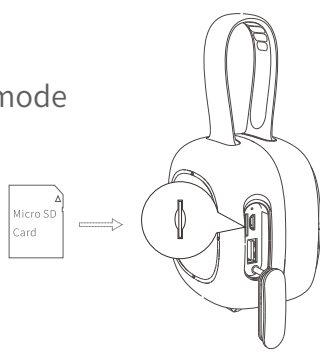
x1	Play/Pause
⊖/+ x1	Volume up/down
⊖/+ >15	Play the previous song/ Play next song

### 2. Speakerphone

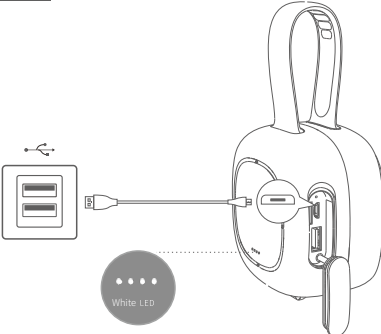


x1	Answer/End call
>2s	Reject call
<b>Siri</b>	
>2s	When connecting the iPhone

### Micro SD Card mode



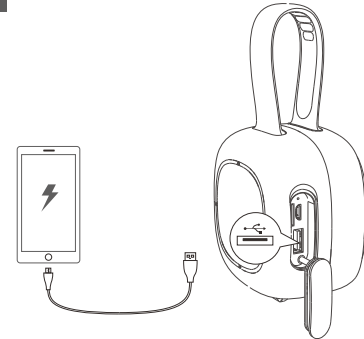
### Charge Your H2GO



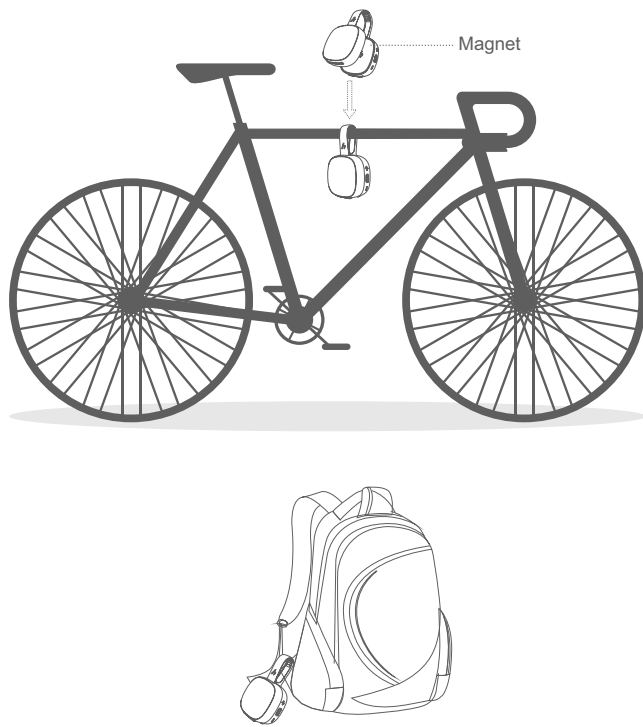
- Flashing White The battery is charging
- \*\*\*\* Fully charged

▲ To preserve battery lifespan, fully charge at least once every 45 days

### Charge USB Devices



### Product usage scenarios



### Specifications

Specifications are subject to change without notice.

Model	H2GO SPEAKER	Audio output	5W
Input	5V = 1A	Chargine time	4.5H
Usb out	5V = 1A	Battery capacity	4000mAh
Play time (varies by volume level and content.)	30H	Size	160x90x60mm
Waterproof rating	IPX7	Weight	400g
SNR	≥80	Frequency response	65Hz-20kHz
Bluetooth version	V4.2	Speaker	45mm
Impedance	4Ω	Range	20M (without obstacles)
Audio input	Bluetooth, Micro SD	Support	TWS, Siri, Voice chat

### Charging and battery information:

1. This product has a built-in non-removable and rechargeable battery. Please use the equipped micro USB cable to charge the battery.
2. The charging current voltage is 5V/1A, and the product cannot be recharged with a charger of more than 5V 1A.
3. Please choose the charger that passes the regular manufacturer's safety certification.
4. Repeated charging on the headset will cause battery performance degradation over time, which is a normal phenomenon for all rechargeable batteries.

### Warning:

1. Please follow the instructions in this manual.
2. Do not use a charger exceeding the rated current and voltage of the headset (5V/1A) to charge the speaker, otherwise it will cause damage to the headset battery.
3. Please use and store this product in the ambient temperature environment.
4. Do not use this product near the heat source, such as a radiator, a hot air conditioner, a stove, or other instruments that produce heat.
5. Don't block the ports of the speaker, such as charging indicator lights and microphone etc..
6. Please don't adjust the volume to the maximum level for a long time to avoid causing dizziness or damage to hearing.
7. No matter the product is damaged for any reason, it must be dealt with in time with the after-sale personnel of us. Any unauthorized demolition and modification will make the warranty invalid.

### NOTE

- This product complies with the radio interference requirements of the European Community.
- This product is designed and manufactured with high quality materials and components, which can be recycled and reused.
- This symbol means the product must not be discarded as household waste, and should be delivered to an appropriate collection facility for recycling. Proper disposal and recycling helps protect natural resources, human health and the environment. For more information on disposal and recycling of this product, contact your local municipality, disposal service, or the shop where you bought this product.

### FCC Statement

This device complies with Part 15 of the FCC Rules. Operation is subject to the following two conditions:

- (1) This device may not cause harmful interference, and
- (2) This device must accept any interference received, including interference that may cause undesired operation.

Warning: Changes or modifications not expressly approved by the party responsible for compliance could void the user's authority to operate the equipment. NOTE: This equipment has been tested and found to comply with the limits for a Class B digital device, pursuant to Part 15 of the FCC Rules. These limits are designed to provide reasonable protection against harmful interference in a residential installation. This equipment generates uses and can radiate radio frequency energy and, if not installed and used in accordance with the instructions, may cause harmful interference to radio communications. However, there is no guarantee that interference will not occur in a particular installation. If this equipment does cause harmful interference to radio or television reception, which can be determined by turning the equipment off and on, the user is encouraged to try to correct the interference by one or more of the following measures:  
Reorient or relocate the receiving antenna.  
Increase the separation between the equipment and receiver.  
Connect the equipment into an outlet on a circuit different from that to which the receiver is connected.

### RF warning statement:

The device has been evaluated to meet general RF exposure requirement. The device can be used in portable exposure condition without restriction.